



**Amarillo
Gear
Company
LLC**

Post Office Box 1789
Amarillo, Texas 79105
2401 Sundown Lane (79118)
Ph. 806 622 1273
Fax 806 622 3258

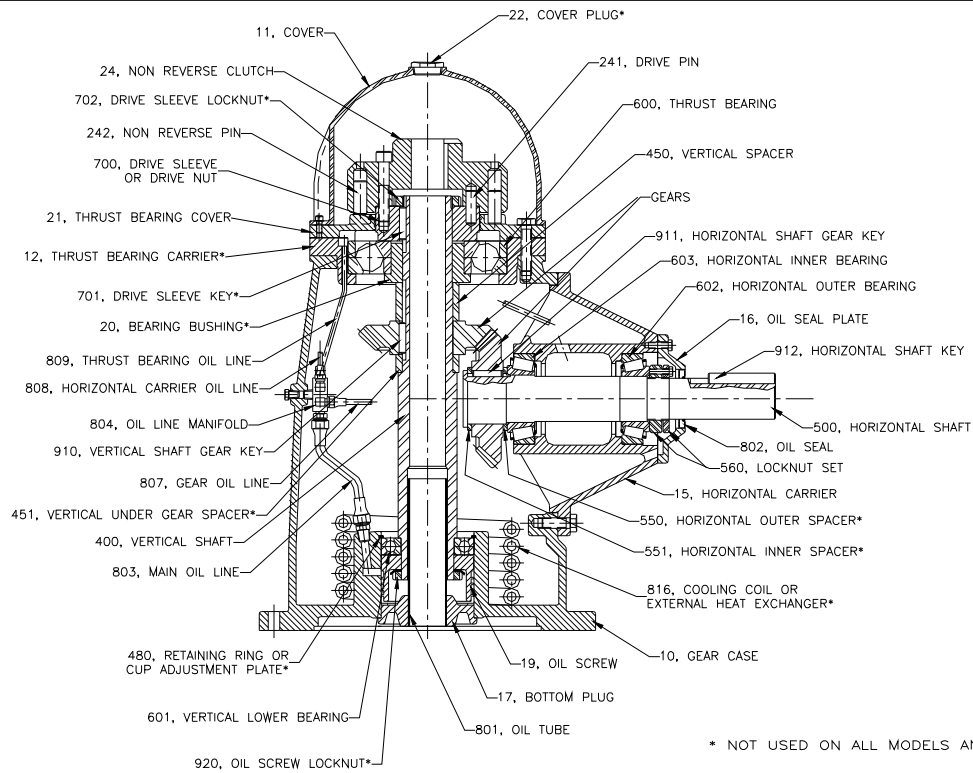
Instructions for Using Current Production Parts List for Small Pump Drives

1. These parts lists are for current production models from the model 20 to the model 350.
Contact Amarillo Gear Company for prices.
2. To make sure you get the correct parts, always provide the serial number of the gear drive when ordering parts.
3. General drawing for pump drives and combination assemblies are provided for parts identification.



A member of The Marmon Group of companies

Copyright ©2003 Amarillo Gear Co.



* NOT USED ON ALL MODELS AND RATIOS

DR.BY: R. ADAMS
 CK.BY:
 APP.BY:

**AMARILLO
 GEAR
 COMPANY**

TYPICAL
 CROSS
 SECTION

MODEL:	20-350
DATE:	11/4/02
PART NO.	
DWG NO.	A5019



Model 20 and 30 Parts List				
STANDARD DRIVE, TYPE S OR SL, FIGURE 1 ROTATION				
Ref. No.	Model 20	Model 30	Part No.	Description
10	X	X	S10C	Gear Case
11	X	X	S11S	Cover
12	X	X		Not available on this model
15	X	X	S15T	Horizontal Carrier
15	X	X	S15TS	Short Horizontal Carrier, 4:3 & 3:2 Ratios
16	X	X	S16T	Oil Seal Plate
17	X	X	S17FW	Bottom Plug With Oil Tube
	X	X	S18	Inspection Plate (Not Shown)
19	X	X	S19F	Oil Screw
20		X	1331	Bearing Bushing, Light Thrust
21	X	X	S21RD	Thrust Bearing Cover
22	X	X		Not available on this model
24	X	X	S24R	Non Reverse Clutch
241	X	X		Drive Pins, Set of 2
242	X	X	NR 20	Non Reverse Pins, Set of 4
400	X	X		Vertical Shaft, Standard & Light Thrust, Drive Sleeve
400	X	X		Vertical Shaft, Standard & Light Thrust, Drive Nut
450	X	X		Vertical Spacer
451	X	X		Vertical Under Gear Spacer
480	X	X	3000-312	Retaining Ring
500	X	X		Horizontal Shaft 1:1, 6:5, & Increasing Ratios
500	X	X		Horizontal Shaft, 3:2 & 4:3 Ratios
550	X	X		Horizontal Outer Spacer
551	X	X		Horizontal Inner Spacer
560	X	X	1231	Locknut Set
600	X	X	7407BG	Thrust Bearing
600	X		6407	Thrust Bearing , Light Thrust
600		X	QJ309	Thrust Bearing , Light Thrust
601	X	X	6208	Vertical Lower Bearing
602	X	X	25821/77	Horizontal Outer Bearing
603	X	X	25821/77	Horizontal Inner Bearing
700	X	X	1168	Drive Nut, Obsolete
700	X	X	1358	Drive Sleeve, Current Design
701	X	X		Not available on this model
702	X	X		Not available on this model
801	X	X	1237	Oil Tube (Order with Bottom Plug)
802	X	X	12456	Oil Seal
803	X	X		Main Oil Line
804	X	X	S 25	Oil Line Manifold
804	X	X	E25W	Oil Line Manifold with Fittings
807	X	X		Gear Oil Line
808	X	X		Horizontal Carrier Oil Line
809	X	X		Thrust Bearing Oil Line
816	X	X		Not available on this model
825	X	X	G 20	Set of Gear Case Gaskets (below S/N 231989)
	X	X	51531	Loctite Gasket Sealant 50ml tube (S/N 231989 & above)
910	X	X	MK1	Vertical Shaft Gear Key
911	X	X	MK1	Horizontal Shaft Gear Key
912	X	X	MK2	Horizontal Shaft Key
920	X	X		Not available on this model

MINIMUM ORDER VALUE - \$100.00 NET.

SOME PART NUMBERS DETERMINED BY RATIO AND/OR OPTIONAL FEATURES. ALWAYS PROVIDE SERIAL NUMBER OF DRIVE WHEN ORDERING PARTS FOR VERIFICATION.



Model 40 Parts List		
STANDARD DRIVE, TYPE S OR SL, FIGURE 1 ROTATION		
Ref. No.	Part No.	Description
10	J10F	Gear Case, 12" BD
10	J10FX	Gear Case, 16-1/2" BD
11	J11A	Cover
12	J12B1	Thrust Bearing Carrier
15	J15D	Horizontal Carrier
15	J15DS	Short Horizontal Carrier, 4:3, 3:2, 7:4, 2:1 & 3:1 Ratios
16	J16A	Oil Seal Plate
17	J17EW	Bottom Plug With Oil Tube
	E18	Inspection Plate (Not Shown)
19	J19E	Oil Screw
20	J20	Thrust Bearing Bushing
21	J21RB	Thrust Bearing Cover
22		Not available on this model
24	J24R	Non Reverse Clutch
241		Drive Pins, Set of 2
242	NR 40	Non Reverse Pins, Set of 4
400		Vertical Shaft, Standard & Light Thrust, Drive Sleeve
400		Vertical Shaft, Standard & Light Thrust, Drive Nut
450		Vertical Spacer
451		Vertical Under Gear Spacer
480	3000-393	Retaining Ring
500	2258	Horizontal Shaft
550		Horizontal Outer Spacer
551		Horizontal Inner Spacer
560	2230	Locknut Set
600	6312	Thrust Bearing, Light Thrust
600	7312BG	Thrust Bearing, Standard Thrust
601	6211	Vertical Lower Bearing
602	M802011/48	Horizontal Outer Bearing
603	M802011/48	Horizontal Inner Bearing
700	2124	Drive Nut, Obsolete
700	2381	Drive Sleeve, Current Design
701		Not available on this model
702		Not available on this model
801	7075-2	Oil Tube (Order with Bottom Plug)
802	15141	Oil Seal
803		Main Oil Line
804	S 25	Oil Line Manifold
804	E25W	Oil Line Manifold with Fittings
807		Gear Oil Line
808		Horizontal Carrier Oil Line
809		Thrust Bearing Oil Line
816	2255	Cooling Coil
825	GC 40	Complete Set of Gaskets (below S/N 231989)
	51531	Loctite Gasket Sealant 50ml tube (S/N 231989 and above)
910	MK3	Vertical Shaft Gear Key
911	MK3	Horizontal Shaft Gear Key
912	MK10	Horizontal Shaft Key
920		Not available on this model
	P1030-4	Oil Sight Glass

MINIMUM ORDER VALUE - \$100.00 NET.

SOME PART NUMBERS DETERMINED BY RATIO AND/OR OPTIONAL FEATURES.
ALWAYS PROVIDE SERIAL NUMBER OF DRIVE WHEN ORDERING PARTS FOR
VERIFICATION.

Model 60A and 80A Parts List				
STANDARD DRIVE, TYPE S OR SL, FIGURE 1 ROTATION				
Ref. No.	Model 60A	Model 80A	Part No.	Description
10	X	X	P10D	Gear Case
11	X	X	P11B	Cover
12	X		P12	Thrust Bearing Carrier
12		X	P12AR	Thrust Bearing Carrier
12	X		P12AR	Thrust Bearing Carrier, Light Thrust
12		X	P12SR	Thrust Bearing Carrier, Light Thrust
15	X		P13TA	Horizontal Carrier
15	X		P13TS	Short Horizontal Carrier, 8:5, 2:1, & 3:1 Ratios
15		X	P14TA	Horizontal Carrier
15		X	P14TS	Short Horizontal Carrier, 5:2, 2:1, & 3:1 Ratios
16	X		P16D	Oil Seal Plate
16		X	P16TFS	Oil Seal Plate
17	X	X	P17EW	Bottom Plug With Oil Tube
	X	X	E18	Inspection Plate (Not Shown)
19	X	X	P19E	Oil Screw
20		X		Not available on this model
21	X		P21RDH	Thrust Bearing Cover
21		X	P21RBH	Thrust Bearing Cover
21	X		P21RBH	Thrust Bearing Cover, Light Thrust
21		X	P21RDH	Thrust Bearing Cover, Light Thrust
22	X	X	E22	Cover Plug
24	X	X	P24R-1	Non Reverse Clutch
241	X	X		Drive Pins, Set of 2
242	X	X	NR60 or NR80	Non Reverse Pins, Set of 4
400		X	3765-1	Vertical Shaft, Standard Thrust
400	X	X		Vertical Shaft, Light Thrust
450	X	X		Vertical Spacer
451	X	X		Vertical Under Gear Spacer
480	X	X	3000-433	Retaining Ring
500	X		3391	Horizontal Shaft
500		X	3392	Horizontal Shaft
500	X	X		Horizontal Shaft, 8:5, 7:4, 2:1, & 3:1 Ratios
550	X	X		Horizontal Outer Spacer
551	X	X		Horizontal Inner Spacer
560	X		2230	Locknut Set
560		X	3268	Locknut Set
600	X		7312	Thrust Bearing
600		X	7412	Thrust Bearing
600	X		6412	Thrust Bearing, Light Thrust
600		X	2-7312	Thrust Bearing, Light Thrust
601	X	X	6212	Vertical Lower Bearing
602	X		HM804810/40	Horizontal Outer Bearing
602		X	JHM807012/45	Horizontal Outer Bearing
603	X		HM804810/48	Horizontal Inner Bearing
603		X	HM807010/46	Horizontal Inner Bearing
700	X	X	3841	Drive Sleeve
701	X	X	MK5	Drive Sleeve Key
702	X	X	N-11	Drive Sleeve Locknut
801	X	X	7075-3	Oil Tube (Order with Bottom Plug)
802	X		15141	Oil Seal
802		X	18733	Oil Seal
803	X	X		Main Oil Line
804	X	X	S 25	Oil Line Manifold
804	X	X	E25W	Oil Line Manifold with Fittings
807	X	X		Gear Oil Line
808	X	X		Horizontal Carrier Oil Line
809	X	X		Thrust Bearing Oil Line
816	X	X	3353	Cooling Coil
825	X	X	GC 60 or GC 80	Complete Set of Gaskets (below S/N 231989)
	X	X	51531	Loctite Gasket Sealant 50ml tube (S/N 231989 and up)
910	X	X	MK5	Vertical Shaft Gear Key
911	X	X	MK5	Horizontal Shaft Gear Key
912	X	X	MK10	Horizontal Shaft Key
920				Not available on this model
	X	X	401100	CR v seal for S60A thru S125A

MINIMUM ORDER VALUE - \$100.00 NET.

SOME PART NUMBERS DETERMINED BY RATIO AND/OR OPTIONAL FEATURES. ALWAYS PROVIDE SERIAL NUMBER OF DRIVE WHEN ORDERING PARTS FOR VERIFICATION.



Model 100A and 125A Parts List				
STANDARD DRIVE, TYPE S OR SL, FIGURE 1 ROTATION				
Ref. No.	Model 100A	Model 125A	Part No.	Description
10	X	X	P10D	Gear Case
11	X	X	P11B	Cover
12	X		P12AR	Thrust Bearing Carrier
12		X	P12SR	Thrust Bearing Carrier
12	X	X	P12SR	Thrust Bearing Carrier, Light Thrust
15	X		P14TA	Horizontal Carrier
15	X		P14TS	Short Horizontal Carrier, 5:2, 2:1, & 3:1 Ratios
15		X	P15TA	Horizontal Carrier
16	X	X	P16TFS	Oil Seal Plate
17	X	X	P17EW	Bottom Plug With Oil Tube
	X	X	E18	Inspection Plate (Not Shown)
19	X	X	P19E	Oil Screw
20				Not available on this model
21	X		P21RBH	Thrust Bearing Cover
21		X	P21RDH	Thrust Bearing Cover
21	X	X	P21RDH	Thrust Bearing Cover, Light Thrust
22	X	X	E22	Cover Plug
24	X	X	P24R-1	Non Reverse Clutch
241	X	X		Drive Pins, Set of 2
242	X	X	NR 100	Non Reverse Pins, Set of 4
400	X		3765-1	Vertical Shaft, Standard Thrust
400		X	3765-4	Vertical Shaft, Standard Thrust
400	X	X	3765-4	Vertical Shaft, Light Thrust
450	X	X		Vertical Spacer
451	X	X		Vertical Under Gear Spacer
480	X	X	3000-433	Retaining Ring
500	X		3392	Horizontal Shaft
500		X	3267	Horizontal Shaft
500	X			Horizontal Shaft, 5:2, 2:1, & 3:1 Ratios
550	X	X		Horizontal Outer Spacer
551	X	X		Horizontal Inner Spacer
560	X	X	3268	Locknut Set
600	X		7412BG	Thrust Bearing
600		X	2-7312	Thrust Bearing
600	X	X	2-7312	Thrust Bearing, Light Thrust
601	X	X	6212	Vertical Lower Bearing
602	X		JHM807012/45	Horizontal Outer Bearing
602		X	HM807010/46	Horizontal Outer Bearing
603	X		HM807010/46	Horizontal Inner Bearing
603		X	5535/5566	Horizontal Inner Bearing
700	X	X	3841	Drive Sleeve
701	X	X	MK5	Drive Sleeve Key
702	X	X	N-11	Drive Sleeve Locknut
801	X	X	7075-3	Oil Tube (Order with Bottom Plug)
802	X	X	18733	Oil Seal
803	X	X		Main Oil Line
804	X	X	S 25	Oil Line Manifold
804	X	X	E25W	Oil Line Manifold with Fittings
807	X	X		Gear Oil Line
808	X	X		Horizontal Carrier Oil Line
809	X	X		Thrust Bearing Oil Line
816	X	X	3353	Cooling Coil
825	X	X	GC 100 or GC 125A	Complete Set of Gaskets (below S/N 231989)
	X	X	51531	Loctite Gasket Sealant 50ml tube (S/N 231989 & above)
910	X	X	MK5	Vertical Shaft Gear Key
911	X	X	MK5	Horizontal Shaft Gear Key
912	X	X	MK10	Horizontal Shaft Key
920				Not available on this model
	X	X	401100	CR v seal for S60A thru S125A
	X	X	P1030-4	Oil Sight Glass

MINIMUM ORDER VALUE - \$100.00 NET.

SOME PART NUMBERS DETERMINED BY RATIO AND/OR OPTIONAL FEATURES. ALWAYS PROVIDE SERIAL NUMBER OF DRIVE WHEN ORDERING PARTS FOR VERIFICATION.



Model 150A Parts List		
STANDARD DRIVE, TYPE S OR SL, FIGURE 1 ROTATION		
Ref. No.	Part No.	Description
10	P10M	Gear Case
11	P11B	Cover
12	P12S2M	Thrust Bearing Carrier, Standard or Light Thrust
15	P15M	Horizontal Carrier
15	P15MS	Short Horizontal Carrier, 7:4, 2:1 & 5:2 Ratios
16	M16B	Oil Seal Plate
17	P17MW	Bottom Plug With Oil Tube
	E18	Inspection Plate (Not Shown)
19	P19M	Oil Screw
20		Not available on this model
21	P21RMH	Thrust Bearing Cover, Standard or Light Thrust
22	E22	Cover Plug
24	P24RM	Non Reverse Clutch
241		Drive Pins, Set of 2
242	NR125	Non Reverse Pins, Set of 4
400	3465-3	Vertical Shaft, Standard or Light Thrust
450		Vertical Spacer
451		Vertical Under Gear Spacer
480	3000-500	Retaining Ring
500	3464	Horizontal Shaft
500		Horizontal Shaft, 7:4, 2:1, 5:2, & 3:2 Ratios
550		Horizontal Outer Spacer
551		Horizontal Inner Spacer
560	5237	Locknut Set
600	2-7315BG	Thrust Bearing, Standard or Light Thrust
601	6215	Vertical Lower Bearing
602	JH211710/49	Horizontal Outer Bearing
603	JH211710/49	Horizontal Inner Bearing
700	P700M	Drive Sleeve
701	MK5	Drive Sleeve Key
702	N-14	Drive Sleeve Locknut
801	7075-7	Oil Tube (Order with Bottom Plug)
802	24370	Oil Seal
803		Main Oil Line
804	S 25	Oil Line Manifold
804	E25W	Oil Line Manifold with Fittings
807		Gear Oil Line
808		Horizontal Carrier Oil Line
809		Thrust Bearing Oil Line
816	3353	Cooling Coil
825	GC 150A	Complete Set of Gaskets (S/N below S/N 231989)
	51531	Loctite Gasket Sealant 50ml tube (S/N 231989 & above)
910	MK6	Vertical Shaft Gear Key
911	MK6	Horizontal Shaft Gear Key
912	MK15	Horizontal Shaft Key
920		Not available on this model
	P1030-4	Oil Sight Glass

*MINIMUM ORDER VALUE - \$100.00 NET.
SOME PART NUMBERS DETERMINED BY RATIO AND/OR OPTIONAL FEATURES.
ALWAYS PROVIDE SERIAL NUMBER OF DRIVE WHEN ORDERING PARTS FOR
VERIFICATION.*



Model 200A Parts List		
STANDARD DRIVE, TYPE S OR SL, FIGURE 1 ROTATION		
Ref. No.	Part No.	Description
10	M10F	Gear Case
11	M11B	Cover
12	M12	Thrust Bearing Carrier, Standard or Light Thrust
15	M13TF	Horizontal Carrier, Speed Increasing, 1:1 & 11:10 Ratios
15	M13STF	Horizontal Carrier, Speed Decreasing, Except 11:10 Ratio
16	M16B	Oil Seal Plate
17	M17BW	Bottom Plug With Oil Tube
	E18	Inspection Plate (Not Shown)
19	M19B	Oil Screw
20		Not available on this model
21	M21RDH	Thrust Bearing Cover, Standard or Light Thrust
22	E22	Cover Plug
24	M24R-1	Non Reverse Clutch
241		Drive Pins, Set of 2
242	NR 200	Non Reverse Pins, Set of 4
400	5853	Vertical Shaft, Standard or Light Thrust
450		Vertical Spacer
451		Vertical Under Gear Spacer
480	3000-550	Retaining Ring
500	5262	Horizontal Shaft, Increasing, 1:1, & 11:10 Ratios
500	5261	Horizontal Shaft, Decreasing
500	5383	Horizontal Shaft, 8:5 Ratio
500	5813	Horizontal Shaft, 7:4 Ratio
500	5345	Horizontal Shaft, 5:2 Ratio
500	5265	Horizontal Shaft, 2:1 Ratio
500	5339	Horizontal Shaft, 3:1 Ratio
550		Horizontal Outer Spacer
551		Horizontal Inner Spacer
560	5237	Locknut Set
600	2-7315BG	Thrust Bearing, Standard or Light Thrust
601	6216	Vertical Lower Bearing
602	632/642	Horizontal Outer Bearing
603	H414210/49	Horizontal Inner Bearing
700	5411	Drive Sleeve
701	MK6	Drive Sleeve Key
702	AN-15	Drive Sleeve Locknut
801	7075-4	Oil Tube (Order with Bottom Plug)
802	24370	Oil Seal
803		Main Oil Line
804	S 25	Oil Line Manifold
804	E25W	Oil Line Manifold with Fittings
807		Gear Oil Line
808		Horizontal Carrier Oil Line
809		Thrust Bearing Oil Line
816	5377	Cooling Coil
825	GC 200	Complete set of Gaskets (below S/N 231989)
	51531	Loctite Gasket Sealant 50ml tube (S/N 231989 & above)
910	MK6	Vertical Shaft Gear Key
911	MK6	Horizontal Shaft Gear Key
912	MK15	Horizontal Shaft Key
920		Not available on this model
	P1030-4	Oil Sight Glass

*MINIMUM ORDER VALUE - \$100.00 NET.
SOME PART NUMBERS DETERMINED BY RATIO AND/OR OPTIONAL FEATURES.
ALWAYS PROVIDE SERIAL NUMBER OF DRIVE WHEN ORDERING PARTS FOR
VERIFICATION.*

Model 250, 300, & 350 Parts List				
STANDARD DRIVE, TYPE S, FIGURE 1 ROTATION				
Ref. No.	Model 250	Model 300 & 350	Part No.	Description
10	X	X	M10F	Gear Case
11	X	X	M11B	Cover
12	X	X	M12T	Thrust Bearing Carrier
15	X	X	M15T	Horizontal Carrier, Speed Increasing, Except 10:11 and 4:5
15	X	X	M15TS	Horizontal Carrier, Speed Decreasing, 1:1, 10:11, & 4:5
16	X	X	L16A	Oil Seal Plate
17	X	X	M17TW	Bottom Plug With Oil Tube
	X	X	E18	Inspection Plate (Not Shown)
19	X	X	M19T	Oil Screw
20				Not available on this model
21	X	X	M21T	Thrust Bearing Cover
22	X	X	E22	Cover Plug
24	X	X	M24R-1	Non Reverse Clutch
241	X	X		Drive Pins, Set of 2
242	X	X	NR 250	Non Reverse Pins, Set of 4
400	X	X	5590	Vertical Shaft, Increasing, 1:1, & 11:10 Ratios
400	X	X	5627	Vertical Shaft, Decreasing Ratios
450	X	X		Vertical Spacer
451	X	X		Vertical Under Gear Spacer
480	X	X	M40T	Cup Adjustment Plate
500	X	X	5594	Horizontal Shaft, 1:1, 10:11 & 11:10 Ratios
500	X	X	5598	Horizontal Shaft, 6:5, 4:3, 3:2, & 5:4 Ratios
500	X	X	5612	Horizontal Shaft, 2:1 Ratio
500	X	X	5667	Horizontal Shaft, 3:1 Ratio
500	X	X	5636	Horizontal Shaft, 5:2 Ratio
500	X	X	5741	Horizontal Shaft, 7:4 Ratio
500	X	X	5599	Horizontal Shaft, 4:7, 2:3, & 3:4 Ratios
550	X	X		Horizontal Outer Spacer
551	X	X		Horizontal Inner Spacer
560	X	X	6217	Locknut Set
561	X	X	AN17/W17	Horizontal Gear Retainer
600	X	X	HM926710/40	Thrust Bearing
601	X	X	JHM516810/49	Vertical Lower Bearing
602	X	X	742/749	Horizontal Outer Bearing
603	X	X	6535/6580	Horizontal Inner Bearing
700	X	X	5585	Drive Sleeve
701	X	X	MK14	Drive Sleeve Key
702	X	X	AN16	Drive Sleeve Locknut
801	X	X	7075-12	Oil Tube (Order with Bottom Plug)
802	X	X	29384	Oil Seal
803	X	X		Main Oil Line
804	X	X	S 25	Oil Line Manifold
804	X	X	E25W	Oil Line Manifold with Fittings
807	X	X		Gear Oil Line
808	X	X		Horizontal Carrier Oil Line
809	X	X		Thrust Bearing Oil Line
816	X		5377	Cooling Coil
816		X	FP5X12-14/AMA	Heat Exchanger
825	X	X	GC 250	Complete Set of Gaskets (below S/N 231989)
	X	X	51531	Loctite Gasket Sealant 50ml tube (S/N 231989 & above)
910	X	X	MK12	Vertical Shaft Gear Key
911	X	X	MK20	Horizontal Shaft Gear Key
912	X	X	MK16	Horizontal Shaft Key
920	X	X	AN16	Oil Screw Locknut
	X	X	P1030-4	Oil Sight Glass
	X	X	SM 300	Shims

MINIMUM ORDER VALUE - \$100.00 NET.

SOME PART NUMBERS DETERMINED BY RATIO AND/OR OPTIONAL FEATURES. ALWAYS PROVIDE SERIAL NUMBER OF DRIVE WHEN ORDERING PARTS FOR VERIFICATION.



Combination Parts List

Ref No.	Description	20 & 30	40	60A	80A, 100A, & 125A
		Part No.	Part No.	Part No.	Part No.
12	Thrust Bearing Carrier	S12S	J12S	P12SRC	P12S2
20	Thrust Bearing Bushing	Not Used	J20S	Not Used	Not Used
21	Thrust Bearing Cover	S1121R	J2321	P21N	P21N
400	Vertical Shaft				
600	Thrust Bearings	2-7407BG	2-7312BG	2-7312BG	2-7412BG
702	Drive Sleeve Locknut	N-07	2243	N-11	N-11
724	Sliding Clutch	1183	2248	3293	3293
736	Non-Reverse Pins, Set	NR C20	NR C40	NR C60	NR C80
756	Drive Sleeve	1212	2241	3290	3290
757	Drive Sleeve Cover	1213	2242	3291	3291
758	Bearing Bushing	1214	2244	3294	3294
769	Retaining Ring, Outer	3000-281	3000-334	3000-393	3000-393
770	Retaining Ring, Inner	3100-137	3100-177	3100-215	3100-215
792	Gib Key				
6200Z	Steady Bearing	6207-2RS	6209-2RS	6211-2RS	6211-2RS

Ref No.	Description	150A	200A	250, 300, & 350
		Part No.	Part No.	Part No.
12	Thrust Bearing Carrier	P12C	M12SB	
20	Thrust Bearing Bushing	Not Used	Not Used	5643
21	Thrust Bearing Cover	P21NC	M21C	M21TC
400	Vertical Shaft			
600	Thrust Bearings	2-7315BG	2-7415BG	
702	Drive Sleeve Locknut	N-14	AN-15	AN-16
724	Sliding Clutch	3468	5274	5647
736	Non-Reverse Pins, Set	NR C150A	NR C200	NR C250
756	Drive Sleeve	3689	5271	5644
757	Drive Sleeve Cover	3690	5272	5645
758	Bearing Bushing	3469	5273	5646
769	Retaining Ring, Outer	3000-433	3000-475	3000-500
770	Retaining Ring, Inner	3100-237	3100-275	5100-293
792	Gib Key			
6200Z	Steady Bearing	6212-2RS	6214-2RS	6215-2RS

MINIMUM ORDER VALUE - \$100.00 NET.

SOME PART NUMBERS DETERMINED BY RATIO AND/OR OPTIONAL FEATURES. ALWAYS PROVIDE SERIAL NUMBER OF DRIVE WHEN ORDERING PARTS FOR VERIFICATION.